



# Neptune

## Blue Growth Accelerator



## Call for Expression of Interest

A call addressed to Small and Medium Enterprises and Would-be entrepreneurs. It aims at granting them vouchers up to 60,000 € each and services for the creation of new cross-sectoral value chains and the reconfiguration of existing ones across Europe in the Blue Growth Sector

**North-West Regional Development Agency**

[www.nord-vest.ro](http://www.nord-vest.ro)



NEPTUNE project has received funding from the European Union's Horizon 2020 research and innovation programme under grant agreement No. 691554



# In a nutshell

A unique opportunity for

**Small and Medium Enterprises** and **Would-be-Entrepreneurs** active in

**Water, Maritime, Aerospace, ICT & Microelectronics, Agriculture, Logistics, Creative, Energy, Mobility**

to get direct financial support of

**vouchers** up to 60,000 € and access to a wide range of professional **services**

to develop innovative technologies, services and products in the following sectors

**Water management in rural environments, Water management in urban environments, Port logistics, Fluvial and maritime transport, Environment, Marine renewable energy**

The calls document detailing the eligibility and admissibility criteria, the topics and challenges looking for solutions, the vouchers and services offered, the application and evaluation process, the electronic submission service and the model contract are available at <http://www.neptune-project.eu>

**Deadline 1: 15 March 2017 @17:00 CET**

**Deadline 2: 15 September 2017 @17:00 CET**

Indicative total budget: 3,232,000 €





# What is Blue Growth?

## Why?

Blue Growth is the European Commission's initiative to further harness the potential of Europe's oceans, seas and coasts for:

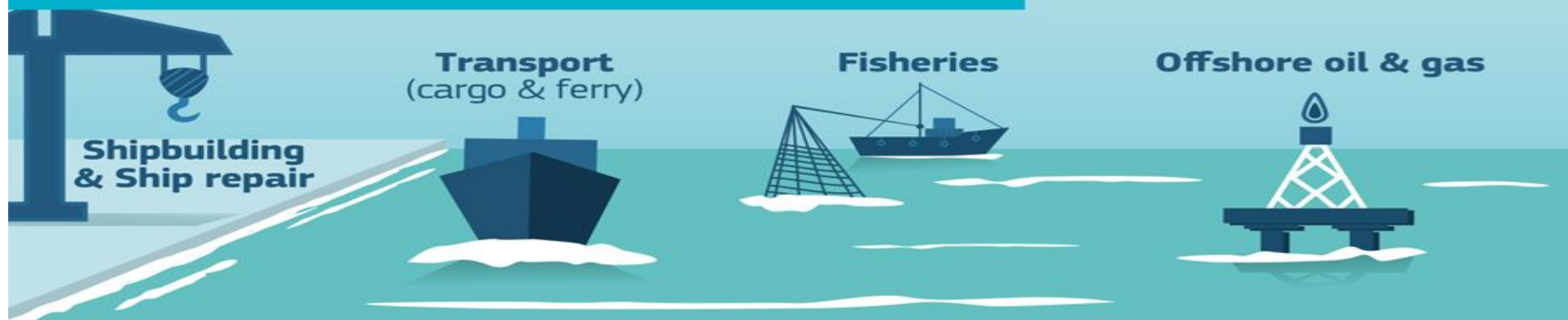


## Focus Area

Five sectors with high potential for sustainable Blue Growth are to be further developed:



other **sectors of the blue economy** crucial for value & jobs



# What is NEPTUNE?

NEPTUNE is a **30 months** project (07/2016 to 12/2018)  
financed by the **INNOSUP** component  
of the **HORIZON 2020** programme of the European Commission  
managed by **EASME** (Executive Agency for Small and Medium-sized Enterprises)  
with a total budget of **4,1 m€**

**More details on**  
**the EU initiatives to support clusters in the emerging industries**  
**are available on the European Cluster Collaboration Platform (ECCP)**  
<http://www.clustercollaboration.eu>

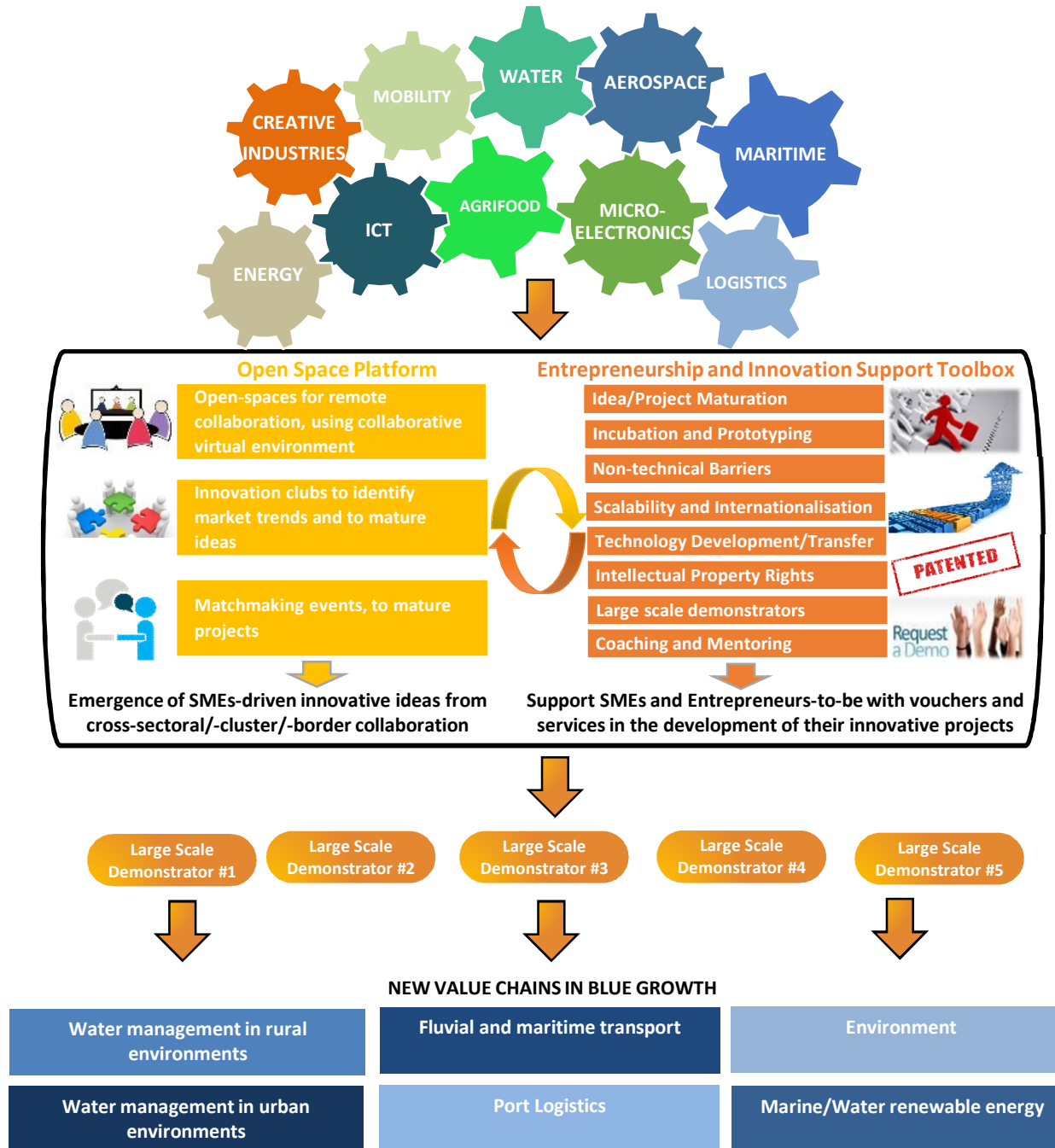


# NEPTUNE's Main Objectives

- To deliver a methodology and an **Open Space Platform** to facilitate the identification of market trends and the emergence of cross-sectoral/-cluster/-border projects in the Blue Growth sector.
- To support the development of **new value chains in the Blue Growth sector** and the reconfiguration of existing ones with an Entrepreneurship and Innovation Support Toolbox combining a complete set of financial vouchers and support services aimed at the creation of new enterprises and the acceleration of SME growth.
- To support the **creation of fertile regional ecosystems** that provide the framework conditions for supporting and funding the emergence of collaboration actions between cluster partners with focus on SMEs in the Blue Growth sector.
- To foster the **creation and the improvement of market ready technologies, services and products** and the improvement of production processes in the Blue Growth sector.
- To support the development of **large-scale demonstrators**, to offer SMEs the opportunity to extend their markets worldwide and to support the creation of new SMEs in the Blue Growth sector.



# NEPTUNE'S Blue Growth Accelerator



# Which are the NBGA targets?

The support of **100 European SMEs** and  
the creation of **10 new companies by Would-be-Entrepreneurs**  
in **15-20 new or reconfigured cross-sectoral/-cluster/-border value chains**  
for the development of around **40 impactful and innovative solutions**  
to  
improve existing or develop new technologies, services or products  
improve production processes replacing or reducing the use of critical resources  
deploy large scale demonstrators





# Which is the NBGA budget?

The NEPTUNE's Entrepreneurship and Innovation Support Toolbox will offer:

Up to **2,680,724 €** in:

Vouchers addressed to SMEs (preferably in consortia or individually)

Vouchers addressed to Would-be entrepreneurs (preferably in teams or individuals)

Up to **552,092 €** in:

Services addressed to SMEs and Would-be entrepreneurs





# Who is backing the NBGA?

The European Commission and **15** of Europe's leading clusters, **3** Science Parks/Technology/Research Centres, **2** regional development Agencies and **2** Innovation/Cluster expert organisations from **7** EU countries:

- **Aerospace Valley (AV)**, in the Aeronautics, Space and Embedded Systems sectors, with members in the regions of Nouvelle Aquitaine and Occitanie in France.
- **Agence de Développement et d'Innovation Nouvelle-Aquitaine (ADI)**, the Regional Agency in the region of Nouvelle-Aquitaine in France ([www.agence-alpc.fr](http://www.agence-alpc.fr)).
- **Agentia de Dezvoltare Regionala Nord-Vest (NWRDA)**, a Regional Development Agency in North-West Romania ([www.nord-vest.ro](http://www.nord-vest.ro)) with the following clusters: Cluj IT and iTech Transilvania in ICT, TREC in Energy, AGRO-FOOD-IND Napoca in Agriculture, CLEMS in Environment.
- **Asociación Clúster de Movilidad y Logística de Euskadi (MLC)**, in Mobility & Logistics and ITS sectors, with members in the Basque Country region in Spain.
- **Corallia**, a multi cluster organisation with members predominantly in the regions of Attica and Western Greece in Greece ([www.corallia.org](http://www.corallia.org)) coordinating the **si-Cluster** in the Space sector, the **mi-Cluster** in the Microelectronics/IoT sectors and the **gi-Cluster** in the Creative Industries sector.
- **Ecole Supérieure des Technologies Industrielles Avancées (ESTIA)**, an Institute of Technology comprising an Engineering School, an EUBIC certified incubator and a Research Lab in France ([www.estia.fr](http://www.estia.fr)).
- **Fondazione Parco Tecnologico Padano (PTP)**, a Science Park in the region of Lombardia in Italy ([www.ptp.it](http://www.ptp.it)) coordinating the CAT.AL cluster in the Agrifood sector.
- **Fundació Eurecat (EURECAT)**, a Technology Centre at the region of Catalonia in Spain ([eurecat.org](http://eurecat.org)) coordinating the Clúster Digital de Catalunya in the ICT sector.
- **INNO TSD**, a consultancy company in France ([www.inno-group.com](http://www.inno-group.com)).
- **Pole Mer Méditerranée (PMM)**, in the Maritime sector, with members in the regions Provence-Alpes-Côte d'Azur and Occitanie in France.
- **SPACEPL**, in the Space sector, with members in the regions Masovia, Pomerania, Lesser Poland, Silesia in Poland.
- **Water Innovation Accelerator (WIN)**, in the Water sector, with members in the regions Skåne, Blekinge, Småland and Halland in Sweden.



# The NEPTUNE Partners

## FRANCE



## SWEDEN



## POLAND



## ROMANIA



## GREECE



## SPAIN



## ITALY



# Which are the targeted Clusters?

- Aerospace Valley ([aerospace-valley.com](http://aerospace-valley.com))
- AgroTransilvania Cluster ([agrocluster.ro](http://agrocluster.ro))
- CAT.AL ([clusteragrofoodlombardia.eu](http://clusteragrofoodlombardia.eu))
- CLEMS ([clems.ro](http://clems.ro))
- Cluj IT Cluster ([clujit.ro](http://clujit.ro))
- Clúster Digital de Catalunya ([clusterdigital.cat](http://clusterdigital.cat))
- gi-Cluster ([gi-Cluster.gr](http://gi-Cluster.gr))
- iTech Transilvania Cluster ([itech.aries-transilvania.ro](http://itech.aries-transilvania.ro))
- mi-Cluster ([mi-Cluster.gr](http://mi-Cluster.gr))
- MLC ITS Euskadi ([mlcluster.com](http://mlcluster.com))
- PMM TVT ([polemermediterranee.com](http://polemermediterranee.com))
- si-Cluster ([si-Cluster.gr](http://si-Cluster.gr))
- SpacePL ([space.biz.pl](http://space.biz.pl))
- Transylvania Energy Cluster ([trec-cluster.ro](http://trec-cluster.ro))
- WIN ([winwater.se](http://winwater.se))



# Which are the targeted Regions?

- France:
  - Nouvelle Aquitaine, Occitanie and Provence-Alpes-Côte d'Azur
- Greece:
  - Attica and Western Greece
- Italy:
  - Lombardia
- Poland:
  - Masovia, Pomerania, Lesser Poland, Silesia
- Romania:
  - North-West
- Spain:
  - Basque Country and Catalonia
- Sweden:
  - Skåne, Blekinge, Småland and Halland



# Which are the Topics/Challenges looking for solutions in the NBGA?

- **Water management in rural environments:**
  - Water saving and reuse in agriculture
  - Sustainable agriculture in water-poor rural areas
  - Precision farming
  - Smart irrigation systems
  - Resource recovery from waste water (energy, water, nutrients)
  - Use and exploitation of sea products (e.g. seaweed, algae) in agriculture
  - Leaks and pollution monitoring and handling
  - Small-scale waste water treatment
  - Reservoirs and groundwater sustainability and management
  - Novel water production systems
  - Biological water treatment (e.g. through microalgae)
  - Off-grid drinking water production
  - Use of smart materials



# Which are the Topics/Challenges looking for solutions in the NBGA?

- **Water management in urban environments:**
  - Efficient (integrated) urban water resource management (IWRM)
  - Water saving and reuse in residential areas and industry
  - Smart grids and connectivity in water distribution systems networks
  - Water saving and reuse in residential areas and industry
  - Resource recovery from waste water (energy, water, nutrients)
  - Leaks and pollution monitoring and handling
  - Novel and eco-friendly treatment solutions for waste water
  - Biological water treatment (e.g. through microalgae)
  - Use of smart materials



# Which are the Topics/Challenges looking for solutions in the NBGA?

- **Port logistics:**
  - Network/Logistics
  - Energy saving
  - Layout & Organisation
  - Dock facilities
  - Waterways transport
  - Treatment systems
  - Maintenance
  - Supply
  - Security
  - e-services
  - Distributed automation





# Which are the Topics/Challenges looking for solutions in the NBGA?

- **Fluvial and maritime transport:**

- Energy efficiency
- Shape
- Materials
- Instrumentation
- Recycling
- Renewable energy
- Treatment systems
- Products & services to increase security/safety in maritime conditions
- Comfort of people
- Operations efficiency
- Production methods
- Clean Fuel (LNG equipment, Electrical equipment, Hydrogen equipment)
- Water transportation systems (including guidance, navigation and control, path planning and collision avoidance)
- Other naval & ports equipment



# Which are the Topics/Challenges looking for solutions in the NBGA?

- **Environment:**

- Coastal hazards (floods, erosion, submersion)
- Water quality monitoring
- Biodiversity
- Sustainable coastal and sub-marine development and tourism
- Pollution tracking, modelling
- Aquaculture
- Adoption of nature-based solutions to reduce environmental impacts and climate effects
- Use of satellite and in-situ data for environmental monitoring
- Deep sea resources/minerals exploration
- Blue biotechnology



# Which are the Topics/Challenges looking for solutions in the NBGA?

- **Marine/Water renewable energy:**

- Improvement of MREs energy output
- Optimization of marine hydrokinetic energy technologies (current, tidal and water energy)
- Logistical and technical support to the off-shore deployment of MREs
- Safety monitoring and maintenance operations for off-shore installations
- Integration and connection of MRE to the main grid
- Zoning, permitting and local acceptability
- Numerical modelling
- Other related Hydro-energy topic





# Neptune

Blue Growth Accelerator

## Vouchers to SMEs



*NEPTUNE project has received funding from the European Union's Horizon 2020 research and innovation programme under grant agreement No. 691554*



# Which are the vouchers offered?



Voucher type	Voucher scope
<b>Voucher #1</b> Idea/Project Maturation	Help the maturation of a cross-sectoral/-cluster/-border idea/project to apply for support of a voucher or service from NEPTUNE partners
<b>Voucher #2</b> Intellectual Property	Protect any type of intellectual property (patent, trademark, etc.) at any step of the protection process that will be used as background for an application to the NEPTUNE call or that is a result of a project supported by the NEPTUNE consortium
<b>Voucher #3</b> Non-technical Barriers	Overcome any non-technical barrier (societal, legal, certification, etc.) that inhibits a technology, service, product or process to achieve its market potential
<b>Voucher #4</b> Technology Development/Transfer	Transfer technology, know-how, service, product or process preferably to another sector and/or Develop technology to improve a service, product or process
<b>Voucher #5</b> Scalability and Internationalisation	Deployment of service, product or process able to cope and perform under an increased or expanding workload and/or in other international markets
<b>Voucher #6</b> Incubation and Prototyping	Develop cross-sectoral/-cluster/-border prototype of a new or improved technology, service, product or production process or support business development
<b>Voucher #7</b> Large-scale demonstrators	Demonstrate cross-sectoral/-cluster/-border solutions in large-scale operational environments

# Which are the eligible costs and maximum funding offered by the vouchers?

Voucher type	Eligible costs	Funding
<b>Voucher #1</b> Idea/Project Maturation	SME travel costs to meet potential partners to setup a strong partnership for the submission of an expression of interest for vouchers and services to the NEPTUNE consortium or to participate in a B2B meeting organized by NEPTUNE	Up to 1,000 €
<b>Voucher #2</b> Intellectual Property	Expert services	Up to 5,000 €
<b>Voucher #3</b> Non-technical Barriers	Expert services	Up to 10,000 €
<b>Voucher #4</b> Technology Development/Transfer	Expert services	Up to 20,000 €
<b>Voucher #5</b> Scalability and Internationalisation	Expert services	Up to 20,000 €
<b>Voucher #6</b> Incubation and Prototyping	SME Staff costs, incubation costs and expert services	Up to 60,000 €
<b>Voucher #7</b> Large scale demonstrators	SME Staff costs, equipment/software costs, travel costs, consumables costs, demonstration costs and expert services	Up to 60,000 €



# Who can apply?

Voucher type	Who can apply?
<b>Voucher #1</b> Idea/Project Maturation	At least 1 SME, preferably with other SMEs, simultaneously applying to voucher#1 for the same meeting/event
<b>Voucher #2</b> Intellectual Property	At least 1 SME, preferably with other SMEs, simultaneously applying to voucher#2 and other innovation actors from the NEPTUNE regions to protect intellectual property (common in the case of more applicants)
<b>Voucher #3</b> Non-technical Barriers	At least 1 SME, preferably with other SMEs, simultaneously applying to voucher#3 and other innovation actors from the NEPTUNE regions to overcome non-technical barriers
<b>Voucher #4</b> Technology Development/Transfer	At least 1 SME, preferably with other SMEs, simultaneously applying to voucher#4 and other innovation actors from the NEPTUNE regions to develop or transfer a technology/service/product/process to another sector
<b>Voucher #5</b> Scalability and Internationalization	At least 1 SME, preferably with other SMEs, simultaneously applying to voucher#5 and other innovation actors from the NEPTUNE regions to deploy a service/product/process at larger scale or other markets
<b>Voucher #6</b> Incubation and Prototyping	At least 1 SME, preferably with other SMEs, simultaneously applying to voucher#6 and other innovation actors from the NEPTUNE regions to host their company in an incubator and/or develop a cross-sectoral/-cluster/-border prototype of a new or improved technology, service, product or production process
<b>Voucher #7</b> Large scale demonstrators	At least 2 SMEs, preferably with other SMEs, simultaneously applying to voucher#7 and other innovation actors from the NEPTUNE regions to demonstrate cross-sectoral/-cluster/-border solutions in large scale operational environments





# When to apply and when to expect the evaluation and results?

Voucher type	Call opens	Cut-off Dates	Evaluation Results Dates	Contract Dates
<b>Voucher #1</b> Idea/Project Maturation	Jan. 2017	No Cut-off Dates. Continuous evaluation of applications received from Jan. 2017 to Sep. 2018. Evaluation in 1 month.		
<b>Voucher #2</b> Intellectual Property		Cut-off Date 1 15 Mar. 2017 @17:00 CET	Evaluation 1 Results Up to May 2017	Contracts 1 Signed Up to Jul. 2017
<b>Voucher #3</b> Non-technical Barriers				
<b>Voucher #4</b> Technology Development/Transfer				
<b>Voucher #5</b> Scalability and Internationalisation				
<b>Voucher #6</b> Incubation and Prototyping				
<b>Voucher #7</b> Large scale demonstrators		Cut-off Date 2 15 Sep. 2017 @17:00 CET	Evaluation 2 Results Up to Nov. 2017	Contracts 2 Signed Up to Jan. 2018



# Which is the payment scheme?

Voucher type	Payment Scheme
Voucher #1 Idea/Project Maturation	100% upon completion of trip and submission of trip report.
Voucher #2 Intellectual Property	50% upon signature of contract between NEPTUNE and SME 50% upon acceptance of all contract deliverables and final report
Voucher #3 Non-technical Barriers	
Voucher #4 Technology Development/Transfer	40% upon signature of contract between NEPTUNE and SME 40% upon acceptance of all mid-term contract deliverables and mid-term report 20% upon acceptance of all contract deliverables and final report
Voucher #5 Scalability and Internationalisation	
Voucher #6 Incubation and Prototyping	
Voucher #7 Large scale demonstrators	





# Neptune

Blue Growth Accelerator

## Vouchers to Would-be-Entrepreneurs



*NEPTUNE project has received funding from the European Union's Horizon 2020 research and innovation programme under grant agreement No. 691554*



# Which are the vouchers offered?



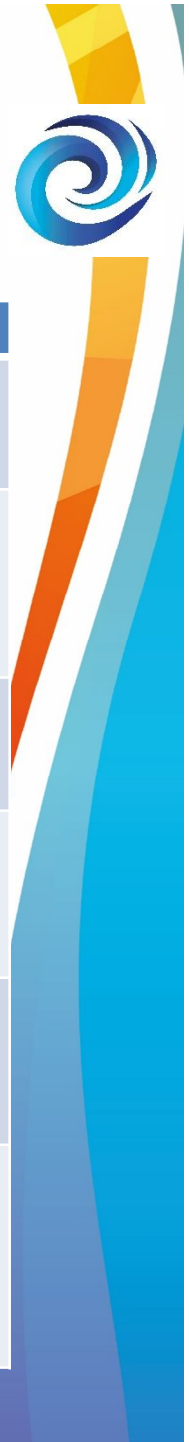
Voucher type	Voucher Scope
<b>Voucher #1</b> Idea/Project Maturation	Help the maturation of a cross-sectoral/-cluster/-border idea/project to apply for support of a voucher or service from NEPTUNE partners
<b>Voucher #2</b> Intellectual Property	Protect any type of intellectual property (patent, trademark, etc.) at any step of the protection process that will be used as background for an application to the NEPTUNE call or that is a result of a project supported by the NEPTUNE consortium
<b>Voucher #3</b> Non-technical Barriers	Overcome any non-technical barrier (societal, legal, certification, etc.) that inhibits a technology, service, product or process to achieve its market potential
<b>Voucher #4</b> Technology Development/Transfer	Transfer technology, know-how, service, product or process preferably to another sector and/or Develop technology to improve a service, product or process
<b>Voucher #5</b> Scalability and Internationalisation	Deployment of service, product or process able to cope and perform under an increased or expanding workload and/or in other international markets
<b>Voucher #6</b> Incubation and Prototyping	Develop cross-sectoral/-cluster/-border prototype of a new or improved technology, service, product or production process or support business development

# Which are the eligible costs and maximum funding offered by the vouchers?



Voucher type	Eligible costs	Funding
<b>Voucher #1</b> Idea/Project Maturation	Travel costs of the applicant Would-be entrepreneur to meet potential partners to setup a strong partnership for the submission of an expression of interest for vouchers and services to the NEPTUNE consortium or to participate in a B2B meeting organized by NEPTUNE	Up to 1,000 €
<b>Voucher #2</b> Intellectual Property	Expert services	Up to 5,000 €
<b>Voucher #3</b> Non-technical Barriers	Expert services	Up to 10,000 €
<b>Voucher #4</b> Technology Development/Transfer	Expert services	Up to 20,000 €
<b>Voucher #5</b> Scalability and Internationalisation	Expert services	Up to 20,000 €
<b>Voucher #6</b> Incubation and Prototyping	Staff costs, equipment/software costs, travel costs, consumables costs, incubation costs and expert services	Up to 60,000 €

# Who can apply?



Voucher type	Who can apply?
<b>Voucher #1</b> Idea/Project Maturation	At least 1 Would-be entrepreneur preferably, with one or several Would-be entrepreneurs or SMEs, simultaneously applying to voucher#1 for the same meeting/event
<b>Voucher #2</b> Intellectual Property	At least 1 Would-be entrepreneur, preferably with one or several Would-be entrepreneurs or SMEs, simultaneously applying to voucher#2 and other innovation actors from the NEPTUNE regions to protect intellectual property (common in the case of more applicants)
<b>Voucher #3</b> Non-technical Barriers	At least 1 Would-be entrepreneur preferably with one or several Would-be entrepreneurs or SMEs, simultaneously applying to voucher#3 and other innovation actors from the NEPTUNE regions to overcome non-technical barriers
<b>Voucher #4</b> Technology Development/Transfer	At least 1 Would-be entrepreneur preferably with one or several Would-be entrepreneurs or SMEs, simultaneously applying to voucher#4 and other innovation actors from the NEPTUNE regions to develop or transfer a technology/service/product/process to another sector
<b>Voucher #5</b> Scalability and Internationalisation	At least 1 Would-be entrepreneur preferably with one or several Would-be entrepreneurs or SMEs, simultaneously applying to voucher#5 and other innovation actors from the NEPTUNE regions to deploy a service/product/process at larger scale
<b>Voucher #6</b> Incubation and Prototyping	At least 1 Would-be entrepreneur preferably with one or several Would-be entrepreneurs or SMEs, simultaneously applying to voucher#6 and other innovation actors from the NEPTUNE regions to create/develop their company and/or develop a cross-sectoral/-cluster/-border prototype of a new or improved technology, service, product or production process

# When to apply and when to expect the evaluation and results?

Voucher type	Call opens	Cut-off Dates	Evaluation Results Dates	Contract Dates
Voucher #1 Idea/Project Maturation	Jan. 2017	No Cut-off Dates. Continuous evaluation of applications received from Jan. 2017 to Sep. 2018. Evaluation in 1 month.		
Voucher #2 Intellectual Property		Cut-off Date 1 15 Mar. 2017 @17:00 CET	Evaluation 1 Results Up to May 2017	Contracts 1 Signed Up to Jul. 2017
Voucher #3 Non-technical Barriers				
Voucher #4 Technology Development/Transfer				
Voucher #5 Scalability and Internationalization				
Voucher #6 Incubation and Prototyping		Cut-off Date 2 15 Sep. 2017 @17:00 CET	Evaluation 2 Results Up to Nov. 2017	Contracts 2 Signed Up to Jan. 2018





# Which is the payment scheme?

Voucher type	Payment Scheme
Voucher #1 Idea/Project Maturation	100% upon completion of trip and submission of trip report.
Voucher #2 Intellectual Property	50% upon signature of contract between NEPTUNE and SME 50% upon acceptance of all contract deliverables and final report
Voucher #3 Non-technical Barriers	
Voucher #4 Technology Development/Transfer	40% upon signature of contract between NEPTUNE and SME 40% upon acceptance of all mid-term contract deliverables and mid-term report 20% upon acceptance of all contract deliverables and final report
Voucher #5 Scalability and Internationalization	
Voucher #6 Incubation and Prototyping	





# Neptune

Blue Growth Accelerator

## Coaching and Mentoring Services to SMEs and Would-be entrepreneurs



*NEPTUNE project has received funding from the European Union's Horizon 2020 research and innovation programme under grant agreement No. 691554*



# Which are the services offered?



Service type	Service scope
Service #1 Incubation	Assess the opportunities for incubation and redirect to the right incubation programme. Support on the proposal preparation to access to the incubation programme. Introduction and advice to approach Business Angels, Venture Capital, etc. Support business acceleration and staff training.
Service #2 Business Model	Assess the business model and the business plan and recommend improvements.
Service #3 Funding Opportunities	Identify funding opportunities. Technical and administrative support to access funding. Support on the creation of project consortia. Support on the preparation of the proposal.
Service #4 Technological Support	Assess the potential of a technology or know-how in relation with target market. Find out relevant experts or data sources. Support on management and product development.
Service #5 Intellectual Property Rights	Support the protection of any type of intellectual property (patent, trademark, etc.) at any step of the protection process
Service #6 Internationalisation	Assess opportunities for internationalization and recommendations. Support on trade mission, stands for international exhibitions, organization of events, seminars.
Service #7 Branding	Support to branding, digital media development, etc.

# Which are the NEPTUNE service providers?



Service type	Water management in rural environment	Water management in urban environment	Port logistics	Fluvial and maritime transport	Environment	Water/ Marine renewable energies
Service #1 Incubation	PTP, AV, WIN, Corallia, ESTIA, SPACEPL	PTP, WIN, Corallia, ESTIA, AV	Corallia, ESTIA, AV	Corallia, ESTIA, AV	PTP, WIN, Corallia, ESTIA, AV	WIN, Corallia, ESTIA, AV
Service #2 Business Model	PTP, <b>NWRDA</b> , PMM, WIN, Corallia, ESTIA, EURECAT	PTP, <b>NWRDA</b> , WIN, Corallia, ESTIA, EURECAT	MLC, PMM, Corallia, ESTIA, SPACEPL	PMM, Corallia, ESTIA	PTP, MLC, <b>NWRDA</b> , PMM, WIN, Corallia, ESTIA	<b>NWRDA</b> , PMM, WIN, ADI, Corallia, ESTIA
Service #3 Funding Opportunities	PTP, <b>NWRDA</b> , PMM, AV, WIN, EURECAT ADI, Corallia, ESTIA	PTP, <b>NWRDA</b> , PMM, WIN, ADI, Corallia, ESTIA, EURECAT, AV	MLC, PMM, ADI, Corallia, ESTIA, AV	<b>NWRDA</b> , PMM, ADI, Corallia, ESTIA, AV	PTP, MLC, <b>NWRDA</b> , PMM, WIN, ADI, Corallia, ESTIA, AV	<b>NWRDA</b> , PMM, WIN, ADI, Corallia, AV ESTIA
Service #4 Technological Support	PTP, <b>NWRDA</b> , PMM, AV, WIN, Corallia, ESTIA, EURECAT	PTP, <b>NWRDA</b> , PMM, WIN, ESTIA, EURECAT, AV	MLC, PMM, Corallia, ESTIA, AV	<b>NWRDA</b> , PMM, Corallia, ESTIA, AV	PTP, MLC, <b>NWRDA</b> , PMM, WIN, Corallia, ESTIA, AV	<b>NWRDA</b> , PMM, WIN, ADI, ESTIA, AV
Service #5 IPR	PTP, <b>NWRDA</b> , PMM, ADI, Corallia	PTP, <b>NWRDA</b> , PMM, ADI, Corallia, ESTIA	MLC, PMM, ADI, Corallia, ESTIA	<b>NWRDA</b> , PMM, ADI, Corallia, ESTIA	PTP, MLC, <b>NWRDA</b> , PMM, ADI, Corallia, ESTIA	<b>NWRDA</b> , PMM, ADI, Corallia, ESTIA
Service #6 Internationalisation	PTP, <b>NWRDA</b> , PMM, AV, WIN, Corallia	PTP, <b>NWRDA</b> , PMM, WIN, Corallia, AV	MLC, PMM, Corallia, ESTIA, SPACEPL, AV	<b>NWRDA</b> , PMM, Corallia, ESTIA, AV	PTP, MLC, <b>NWRDA</b> , PMM, WIN, Corallia, ESTIA, , AV	<b>NWRDA</b> , PMM, WIN, Corallia, ESTIA, AV
Service #7 Branding	Corallia	Corallia	Corallia	Corallia	Corallia	Corallia

# Who can apply?

Service type	Who can apply?
Service #1 Incubation	1 SME (member of one of the NEPTUNE clusters or established in one of the NEPTUNE regions) or 1 Would-be entrepreneur from any of the NEPTUNE regions
Service #2 Business Model	
Service #3 Funding Opportunities	
Service #4 Technological Support	
Service #5 Intellectual Property Rights	
Service #6 Internationalisation	
Service #7 Branding	



# When to apply and when to expect the evaluation and results?

Service type	Call opens	Cut-off Dates	Evaluation Results Dates	Contract Dates
Service #1 Incubation	Jan. 2017	No Cut-off Dates. Continuous evaluation of applications received from Jan. 2017 to Sep. 2018. Evaluation in 1 month. Contract to be signed.		
Service #2 Business Model				
Service #3 Funding Opportunities				
Service #4 Technological Support				
Service #5 Intellectual Property Rights				
Service #6 Internationalisation				
Service #7 Branding				



# More information

- France:
  - Pauline Théophane ([neptune@aerospace-valley.com](mailto:neptune@aerospace-valley.com)), Aerospace Valley, Colin RUEL ([ruel@polemermediterranee.com](mailto:ruel@polemermediterranee.com)), Pole Mer Méditerranée, Rémi Vignes ([r.vignes@agence-alpc.fr](mailto:r.vignes@agence-alpc.fr)), Laurent THIERRY ([l.thierry@agence-alpc.fr](mailto:l.thierry@agence-alpc.fr)), Agence de Développement et d'Innovation Nouvelle-Aquitaine
- Greece:
  - Nektaria Berikou ([neptune@corallia.org](mailto:neptune@corallia.org)), Corallia, Julia Phoca ([neptune@corallia.org](mailto:neptune@corallia.org)), gi-Cluster, Katerina Tzeveleka ([neptune@corallia.org](mailto:neptune@corallia.org)), mi-Cluster, Iosif Paraskevas ([neptune@corallia.org](mailto:neptune@corallia.org)), si-Cluster
- Italy:
  - Andrea Vallan ([andrea.vallan@ptp.it](mailto:andrea.vallan@ptp.it)), Fabrizio Trigila ([fabrizio.trigila@ptp.it](mailto:fabrizio.trigila@ptp.it)), Lorenza Silvestrin ([lorenza.silvestrin@ptp.it](mailto:lorenza.silvestrin@ptp.it)), Fondazione Parco Tecnologico Padano
- Poland:
  - Ilona Tobjasz ([itobjasz@space.biz.pl](mailto:itobjasz@space.biz.pl)), SPACEPL
- Romania, Agentia de Dezvoltare Regionala Nord-Vest
  - Ioana Dragos ([ioana.dragos@nord-vest.ro](mailto:ioana.dragos@nord-vest.ro)), 0755777039
  - Ioana Pavel ([ioana.pavel@nord-vest.ro](mailto:ioana.pavel@nord-vest.ro)), 0755777040
- Spain:
  - Nerea Rojas ([neptune@mlcluster.com](mailto:neptune@mlcluster.com)), Asociación Clúster de Movilidad y Logística de Euskadi, Joan Puaté ([joan.puate@clusterdigital.cat](mailto:joan.puate@clusterdigital.cat)), Gemma Batlle ([gemma.batlle@eurecat.org](mailto:gemma.batlle@eurecat.org)), Gabriel Anzaldi ([gabriel.anzaldi@eurecat.org](mailto:gabriel.anzaldi@eurecat.org)), Cluster Digital
- Sweden:
  - Jeanette Andersson ([jeanette@win.ideon.se](mailto:jeanette@win.ideon.se)), Johan Kronholm ([johan@win.ideon.se](mailto:johan@win.ideon.se)), Maria Säterström-Lantz ([maria@win.ideon.se](mailto:maria@win.ideon.se)), WIN-Water Innovation Accelerator



@NEPTUNE\_BGrowth



Blue Growth Accelerator Group

[www.neptune-project.eu](http://www.neptune-project.eu)

